

# THE FIREHOUSE SCENE

is a publication of the  
*Harlem-Roscoe Fire Protection District*

December 2020

Fire Chief Don Shoevlin

Editor Sheryl Drost



Photo by Sheryl Drost





**FROM THE CHIEF'S DESK**  
BY FIRE CHIEF DON SHOEVLIN

Thank you to all the fire personnel and the Roscoe Lion's Club for a successful new adaptation of the annual senior turkey dinner. Thank you for all the compliments and words of praise. I was tied up in the kitchen carving, but extremely glad we held the event and it worked out well. We served approximately 450 meals.

Our personnel responded to 314 calls in the month of November. They continue to provide expedient professional service that the communities we serve are deserving of. For the month, our average response time (in route to your location) was 2.11 minutes and on the scene time of 6.5 minutes. For the year with one month remaining, we have responded to a total of 3086 calls.

The holiday season is upon us; let us remember those safety tips that we tend to take for granted. Our annual "Keep the Wreath Red" campaign has begun with a wreath in front of all 3 stations. It has been illuminated in red bulbs. If there is a fire in our district through the holidays, (caused by holiday decorations) a bulb will be changed to white. The Harlem Roscoe Fire Protection District urges all citizens & businesses to take a moment to check & clean your fireplaces, furnaces, and dryer vents, use caution with candles, watch the wiring for Christmas lights, and be careful with live Christmas trees becoming too dry.

As we all begin to prepare for the holiday, it would not be out of line to say it is and will be different. In my position a day does not go by that I do not receive numerous emails, phone calls and now zoom meetings to keep abreast of this pandemic and how best to protect my members and those we serve. It is a challenge to always keep positive, but I strongly believe we need to have hope, faith, and fortitude to get through this pandemic which we will. So, to hopefully put a smile on your face and in your heart, as it did for me, I leave you with this classic holiday poem tweaked for 2020. I cannot take credit as I found this with the author unknown.

*"T'was a month before Christmas, when all through the town, People wore masks, that covered a frown. The frown had begun way back in the spring when a global pandemic had changed everything. They called it corona, but unlike the beer, it didn't bring good times, it didn't bring cheer. Contagious and deadly, this virus spread fast, like a wildfire that starts when fueled up by gas. Airplanes were grounded, travel was banned. Borders were closed across air, sea, and land. As the world entered lock-down to flatten the curve, the economy halted, and folks lost their nerve. From March thru July we rode the first wave, people stayed home, they tried to behave. Then summer emerged and the lock-down was lifted. Away from caution, many folks drifted. And now that it's November the cases are spiking, wave two has arrived, much to our disliking. Our front-line workers, medics, doctors, and nurses, try to save all the people, from riding in hearses. This virus is awful, This COVID-19. Please find us a cure and create a vaccine! It's true that this year has had sadness a plenty, we'll never forget the year of 2020. But just 'round the corner - Our beloved holiday season. So why should we be merry? Is there even one reason? To decorate the house and put up the tree, when no one will see it, No one that is . . . but me! Then outside my window the snow gently falls, and I think to myself, heck with it! Let's deck the halls! So, I gather the ribbon, the garland and bows, as I play Christmas carols, my happiness grows and grows. Christmas is not cancelled, and neither is faith, love and hope. Let us lean on one another, let us all learn how to cope. For Jesus is the reason that we celebrate today. Celebrate life that is given and our families far away. The New Year is upon us there is magic in the air. So Merry Christmas to All and a great Happy New Year"*

From myself, Tammy, our children (including our in-law children) and our grandchildren;



MAY THE CHRISTMAS SEASON FILL YOUR HOME  
WITH JOY YOUR HEART WITH LOVE  
YOUR LIFE WITH LAUGHTER  
HOLIDAY JOYS AND BLESSINGS TO YOU ALL  
CHIEF SHOEVLIN



# FIELD FIRE

PHOTOS BY SHERYL DROST

Several residents in the county found out the hard way that a windy day was not a day to burn. Harlem-Roscoe Fire and most of the local fire departments were chasing grass and field fires all afternoon on Nov. 7th. Here are some pictures from the field fire between Graystone Circle and Hononegah Rd. First in units reported flames up to 8 ft high coming across the field and smoke blocking Hononegah Rd. A MABAS box was pulled but then cancelled after two of the department's grass rigs and hose lines off the attack engine were able to control and extinguish the fire and protected homes around the field.





## DUMPSTER FIRE

PHOTOS BY BC DONOVAN

Firefighters extinguished a fire in a dumpster behind Machesney Crossings strip mall on West Lane on Nov. 26th.



## GRASS FIRE

PHOTOS BY SHERYL DROST

Firefighters quickly had a small grass/leaf fire on Sauk Ct. extinguished on Nov. 4th.



## CAR FIRE

PHOTOS BY DIVISION CHIEF TOM AAKER

Firefighters extinguish a fire in the engine of a car on I-90 mm 7.5 on Dec. 9th.





**CHAPLAINS CORNER**  
BY CHAPLAIN PAUL MEYERS



*The hardest thing in the entire world is to remain kind even when people aren't...remain honest even when you're met with lies... remain good even when things go bad. Hurt people hurt people. But don't let them change you. -Kirsten Corley*

Well, first, my logic says that this is not “the hardest thing” but three of the top five hardest things. Yet this is a spot-on statement when it comes to relationships. When we are gathered together with people, whether in a working environment or in a family, those gathered together do not always share the same common vision, the same common goals. And most of our ‘problems’ in life are ‘people problems.’ I especially agree with the ‘hurt people’ line. It has been my experience over 28 years of ministry and 22 in chaplaincy, that this statement hits the bullseye. People who cause hurt and hurting inside. So here are a few tips I have learned in the trenches of people work.

1. Remember who you are and what you stand for. Draw a line of demarcation which you will not cross when it comes to relationships.
2. “Ask questions before you shoot.” When we feel threatened, we usually act in one of two ways: fight or flight. Especially when someone is coming at you, before lashing out in return, ask a question like “why do you suppose this person is coming at me?” “Is this person hurting and really crying for help?”
3. Ask yourself: “In this quarrel, altercation, debate (fill in the blank), why do I have to be right? Why do I have to be right? I have found that stepping out of my convictions for a moment some times causes me to grow or even solidify my own convictions.
4. Listen to understand, instead of listening to respond. Try this out in your next few conversations. You may catch yourself about half-way through a sentence forming your response instead of listening to the end of the sentence. For some reason, we like to “one-up” each other when it may be a better option just to seek to understand the other.

I hope your holidays are joy-filled and relaxing as possible.

Chaplain Paul Meyers





## VEHICLE STABILIZATION: MARRYING VEHICLES AND OBJECTS

BY CAPT. MIKE HUFFMAN

(Mike had the following article published in the Extrication Supplement of the FIRE ENGINEERING Magazine - Nov. 2020)

One vehicle extrication technique involves marrying two vehicles using a ratchet strap so that the two vehicles become one in terms of stabilization. When using the ratchet strap, hook one end to a solid object on the vehicle. Ratchet straps are commonly used for stabilization to assist with rescue strut/buttress systems applications, marrying vehicles and objects together, and containing suspension systems. A ratchet strap used for vehicle extrication applications should have several features: It should be approximately 20 to 30 feet in length, be constructed of polyester to resist most hazards at a vehicle collision, and have a minimum working load limit of 4,000 pounds. Grade 70 chain, called "Transport" chain, is the correct choice for extrication. It is made of heat-treated carbon steel (photos 1-2).

To size up the scene, do the following: Assess the scene for hazards, complete inner and outer circle surveys, and lay out a tarp at the edge of the secure work area for staging tools and equipment (photos 3-4). To stabilize the bottom vehicle, place cribbing between the top and bottom vehicle, filling the void spaces (photo 5). Anchor the ratcheting section of the ratchet strap to the lowest area of the passenger-side A post of the bottom vehicle. Loop the loose end of the ratchet strap through the B post of the top vehicle, and then loop the strap back through and secure it to itself. Tighten the ratchet strap, and lock or marry the top vehicle to the bottom vehicle (photos 6-7).

Recheck all cribbing. Once the top vehicle is secured to the bottom vehicle, a rescuer can be placed inside the bottom vehicle to treat and package the victim. Then the extrication process can begin (photos 8-9).

### Marrying Object to Vehicle Checklist

1. Scene size-up.
2. Inner and outer circle of surveys.
3. Four-point stabilization to vehicle.
4. Place wedges on roof, trunk lid, and/or engine hood so there is no movement of object (fill void spaces).
5. Pull valve stems for vehicle suspension to cribbing.
6. Marry object to vehicle, making all one with ratchet straps.
7. Have medic inside vehicle if possible.
8. Glass management/strip and peak all posts.
9. Have plan A and plan B.





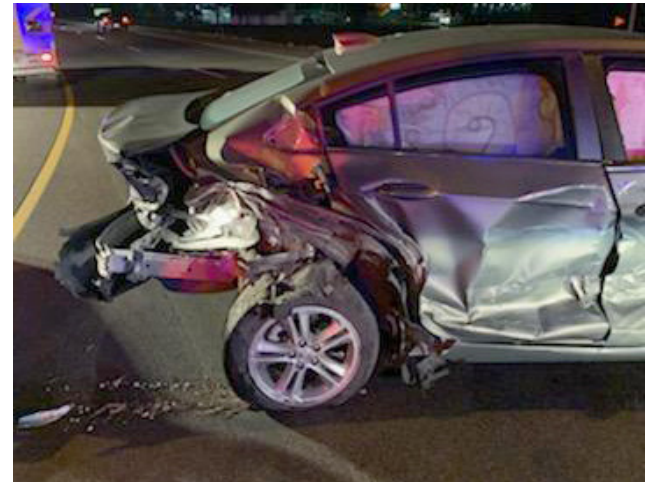
ACCIDENTS PHOTOS BY DUTY OFFICERS



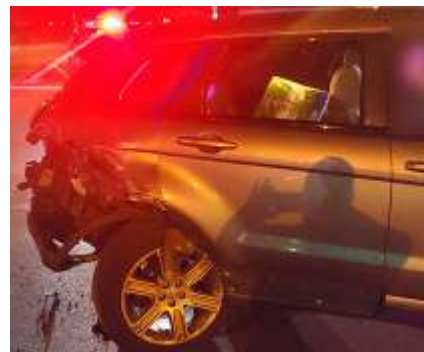
11/21/20 Elevator Rd.



11/29/20 Melbourne Ave. and Hwy 251



12/02/20 Hwy 251 & McDonald Rd.



12/02/20 Hwy 251 and Swanson Rd.

12/08/20 1 Husky Circle



# ANNUAL SENIOR TURKEY DINNER

PHOTOS BY SHERYL DROST

Our yearly Roscoe Lion's Club Senior Turkey Dinner we host was held on Nov. 19th. We love our seniors and Fire Chief Don Shoevlin was adamant that we find a way to serve this dinner! Due to Covid, this year it had to be a drive-up pickup. It ended up working out very well. We worked closely with the health department and we all are so happy to have been able to continue to host this meal! - we served over 450 meals.

Thank you to the Roscoe Lion's club members, all our fire personnel, and our CERT team members that put in the work to make this happen!





## 20 KIDS WINTER JOKES

- What do you call an old snowman? – Water.
- Why don't mountains get cold in the winter? – They wear snow caps.
- What two letters of the alphabet do snowmen prefer? – I.C.
- Knock, knock! Who's there? Lettuce. Lettuce who? Lettuce in, it's cold outside!
- What do you get when you cross a snowman and a dog? – Frost bite.
- How do Eskimos make their beds? – With sheets of ice and blankets of snow.
- What do you call a penguin that steals baby octopuses? – A SQUIDnapper.
- Knock, knock! Who's there? Snow. Snow who? Snowbody!
- What does Jack Frost like best about school? – Snow and tell.
- Where do penguins go to the movies? – At the DIVE-in!
- What falls but never gets hurt? – Snow.
- Who are Frosty's parents? – Mom and Pop-Sicle.
- What do you call a slow skier? – A SLOPEpoke!
- Why do seals swim in saltwater? – Because pepper water makes them sneeze!
- What did the snowman say to the customer? – Have an ice day!
- How do you scare a snowman? – Get out a hairdryer.
- What did the snowman and his wife put over their baby's crib? -A snowmobile.
- How does an Eskimo stick his house together? – With igloo!
- What do snowmen call their offspring? – CHILLdren
- What food do you get when you cross Frosty with a polar bear? – A "brrr" – "grrr"

### Winter-proof your workplace – Employee tips



-  Focus on your footing
-  Walk like a penguin
-  Don't use yourcell phone when walking
-  Use handrails
-  Be aware of changes in walking surfaces
-  Free up your hands
-  Report unsafe conditions
-  Use authorized paths
-  Step down off curbs, not out
-  Step down not out of car
-  Wear appropriate footwear

*Congratulations*



Congratulations to Firefighter Tyler Ebany in completing the requirements set forth to become an EMT with Harlem-Roscoe Fire



**FREE 2021 CALENDARS ARE IN!**

Stop by the administration office at Station One to pick up your free calendar!







BY DIVISION  
CHIEF JAY ALMS

The cold weather adds another dimension to safety in the home and office. The furnace requires annual cleaning as well as monthly checks to keep you warm and safe. Clean filters allow a more efficient heating system. Wood burning and gas fired fireplaces require attention as well. The chimney needs to be checked for creosote build-up and nesting of birds or squirrels.

If you heat your house with wood, whether it's the fireplace or wood burner, you should always burn hard woods for a cleaner fire. When cleaning out the fireplace or wood burner always use a steel container for the ashes. The ashes can remain hot for days. We recommend you store the container outside at least 3 feet away from the house. The smoldering ashes can create deadly carbon monoxide.

We've closed all the windows now, so our fresh ventilation is limited. Dirty filters, dirty and blocked chimneys can contribute to un-safe conditions. Remember to vacuum the build-up on your cold air returns. These registers are usually on the walls near the ceiling opposite your heat vents. Carbon Monoxide poisoning is a deadly odorless, tasteless gas not detected by human senses.

We recommend carbon monoxide detectors near the sleeping areas, near the furnace and water heater. Warming up your car in a closed garage can be deadly as well. One detector on every floor minimum.

Along with required CO detectors, we want you to check your required smoke detectors on a monthly basis as well. Smoke detectors are the best early detection device to ensure your safety. Detectors saves lives daily. Please assist the elderly and disabled to make sure they are protected. The newly manufactured detectors have sealed batteries that are worry free for 10 years. If you know of an elderly or disabled resident that needs assistance with detectors and you are unable to help, please let the Harlem-Roscoe Fire Bureau know. We will be there to assist and perform a safety inspection while were there.

We've witnessed many things that have caused fires. Overloaded outlets, frayed extension cord wires, storage too close to the furnace and water heater, portable electric heaters, burning candles, dirty furnace filters that cause the furnace blower motor to overheat, dry Christmas trees, unattended food on the stove, lint build-up in your clothes dryer, the dryer vent on the exterior of the house needs to be cleaned as well. Using timers for holiday lighting, LED lighting and surge protected outlet power strips can protect you against potential fires.

Safe practices are a year-round expectation, but the cold weather and the holidays seems to add the potential fire risks.

Please have a Safe & Healthy holiday season...if we can help with safe practices please reach out to Harlem-Roscoe Fire Dept...particularly the Fire Protection Bureau.



# KEEP THE WREATH RED



The “Keep the Wreath Red” program is used to raise fire safety awareness during the holiday season and has become an annual event. Each Harlem Roscoe Fire Station has a wreath that is wrapped with red lights. The wreaths remain lit twenty four hours a day during the holiday season. If a fire occurs that is determined to be the result of a holiday decoration, a white bulb replaces a red bulb on the wreath. The hope is the wreath will serve as a constant reminder to practice fire safety during the holiday season. Some suggestions for holiday fire safety are:

- Needles on fresh trees should be green and hard to pull back from the branches, and the needles should not break if the tree has been freshly cut. The trunk should be sticky to the touch.
- Do not place your tree close to a heat source, including a fireplace or heat vent. The heat will dry out the tree, causing it to be more easily ignited by heat, flame or sparks.
- Never put tree branches or needles in a fireplace or wood - burning stove. When the tree becomes dry, discard it promptly.
- Inspect holiday lights each year for frayed wires, bare spots, gaps in the insulation, broken or cracked sockets, and excessive kinking or wear before putting them up. Use only lighting listed by an approved testing laboratory.
- Do not link more than three light strands, unless the directions indicate it is safe. Connect strings of lights to an extension cord before plugging the cord into the outlet
- All decorations should be nonflammable or flame - retardant and placed away from heat vents.
- Ensure that trees and other holiday decorations do not block an exit way. In the event of a fire, time is of the essence. A blocked entry/exit way puts you and your family at risk
- Wrapping paper in the fireplace can result in a very large fire, throwing off dangerous sparks and embers that may result in a chimney fire.
- If you do use lit candles, make sure they are in stable holders and place them where they cannot be easily knocked down. Never leave the house with candles burning.



## hAPPY BIRTHDAY

### December 2020

11th Harold Danger  
12th John Hawkins  
26th Patrick Trollop

### January 2021

5th Matt Bush  
5th David Leslie

13th Bill Gindhart  
20th Jared Christiansen  
22nd Everett Peterson  
22nd Alyssa Nicosia  
28th Brett Whiting  
29th David Hutson  
31st Mark Soppe

## The Firehouse Scene

The Firehouse Scene is a monthly newsletter produced by the Harlem-Roscoe Fire Prot. Dist. #1

Fire Chief - Don Shoefflin  
Editor & Layout - Sheryl Drost

The Firehouse Scene is available at Station One - 10544 Main Street in Roscoe and on the department's website after the second Sunday each month.

E-mail submissions to Sheryl: [hfrfstdrost@gmail.com](mailto:hfrfstdrost@gmail.com)





## HOLIDAY REINDEER FAMILY DRIVE

It is that time of year again. Our annual Holiday Reindeer Family Drive is happening this year following strict COVID precautions.

We will continue accepting donations of non-perishable goods as well as money donations to purchase toys for the kids. Donations will be accepted at any of our stations or can be picked up from your location.

If you have any questions or are a businesses wishing to donate can contact DC John Bergeron at phone number 815-623-7867 or via E-mail at [hfrdjbergeron@gmail.com](mailto:hfrdjbergeron@gmail.com).



## CHRISTMAS TRUCK

You may have noticed our Christmas Fire Truck outside of our Fire Station #1. Well, the fire department kids aren't able to get together this year for their annual Breakfast with Santa due to Covid, so the firefighters got a little creative. Santa will ride on the Christmas truck and deliver a present to each of the firefighter's kids at their home!

